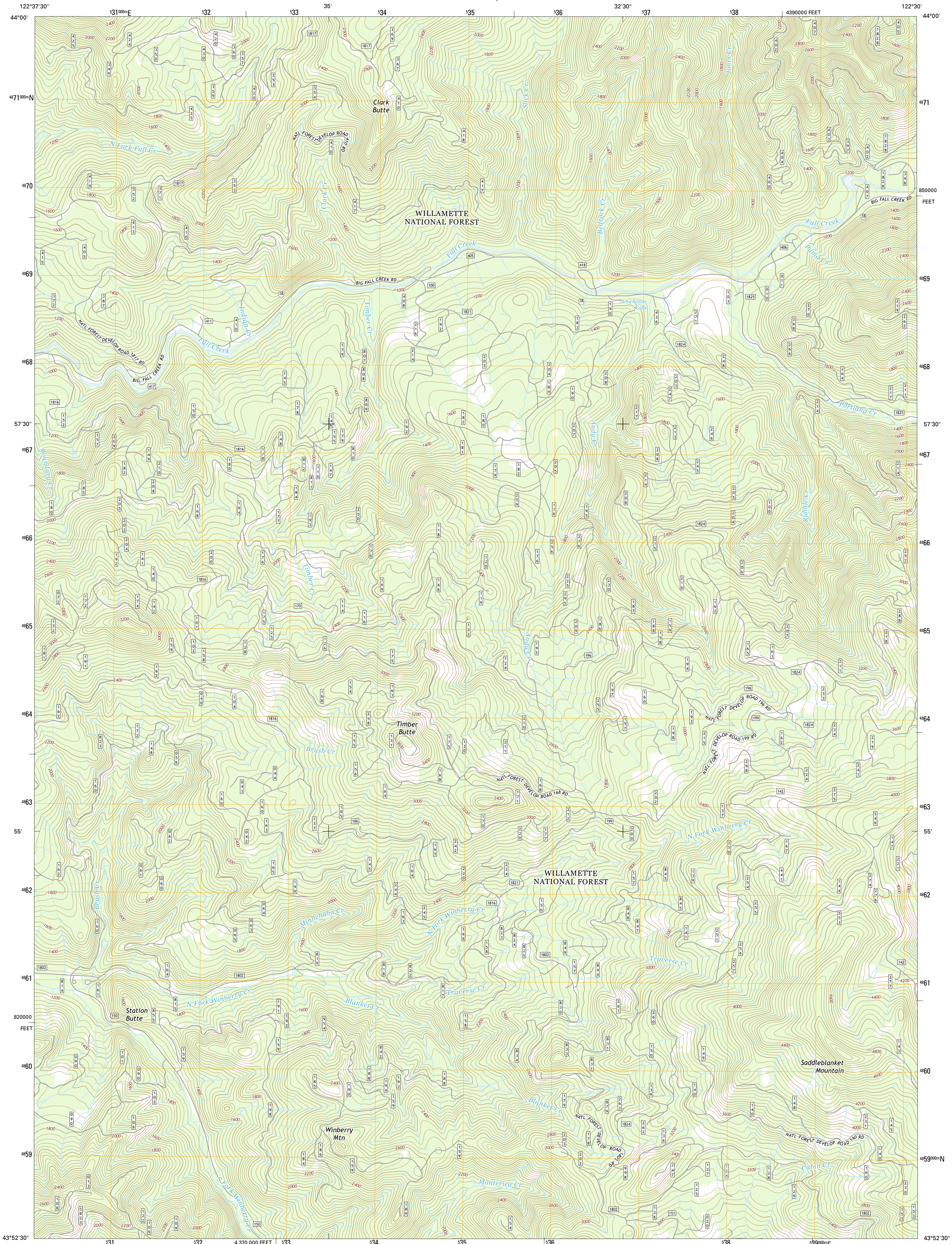




U.S. DEPARTMENT OF THE INTERIOR
U.S. GEOLOGICAL SURVEY



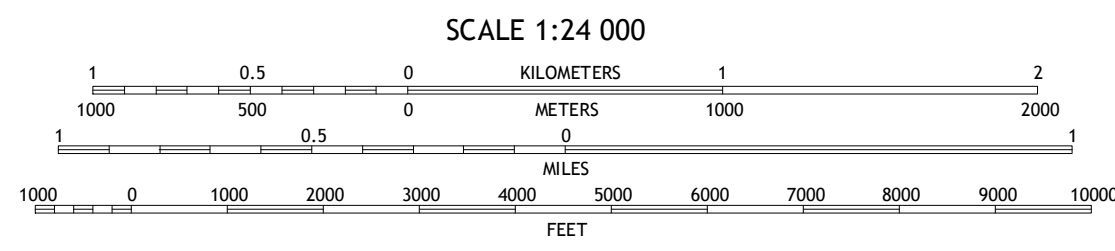
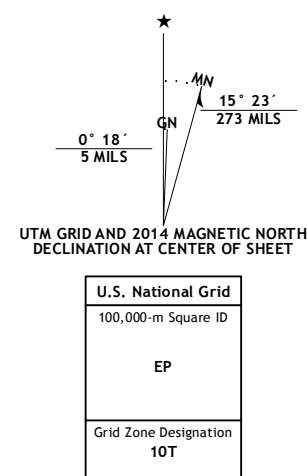
SADDLEBLANKET MOUNTAIN QUADRANGLE
OREGON-LANE CO.
7.5-MINUTE SERIES



Produced by the United States Geological Survey
North American Datum of 1983 (NAD83)
World Geodetic System of 1984 (WGS84). Projection and
1000-meter grid: Universal Transverse Mercator, Zone 10T
10 000-foot ticks: Oregon Coordinate System of 1983 (south
zone)

This map is not a legal document. Boundaries may be
generalized for this map scale. Private lands within government
reservations may not be shown. Obtain permission before
entering private lands.

Imagery: NAIP, July 2012
Roads: HERE, ©2013
Roads within US Forest Service Lands: FS Topo Data
with limited Forest Service updates, 2013
Names: National Hydrography Dataset, 2013
Hydrography: National Hydrography Dataset, 2012
Contours: National Elevation Dataset, 1999
Boundaries: Multiple sources; see metadata file 1972 - 2013
Public Land Survey System: BLM, 2011



ROAD CLASSIFICATION

Expressway	Local Connector	
Secondary Hwy	Local Road	
Ramp	4WD	
Interstate Route	US Route	State Route
FS Primary Route	FS Passenger Route	FS High Clearance Route

Check with local Forest Service unit for current travel conditions and restrictions.

CONTOUR INTERVAL 40 FEET
NORTH AMERICAN VERTICAL DATUM OF 1988

This map was produced to conform with the
National Geospatial Program US Topo Product Standard, 2011.
A metadata file associated with this product is draft version 0.6.16

1	2	3
4	5	6
7	8	

1 Leaburg
2 Goat Point
3 Nimrod
4 Fall Creek Lake
5 Sinker Mountain
6 Mount June
7 Westfir West
8 Westfir East

SADDLEBLANKET MOUNTAIN, OR
2014

